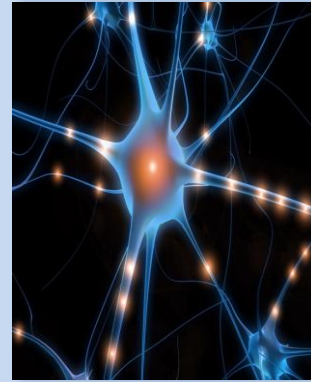
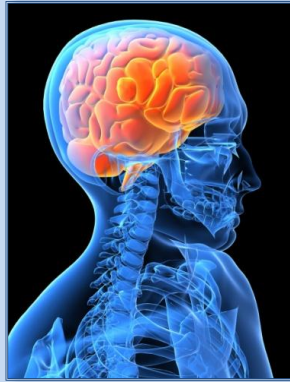


# HEALTHCARE CAREERS

## Discovery

### Update



**November 13<sup>th</sup> 2008**

9:00am to 12:00pm

*Free Lunch, dynamic speakers,  
Interactive quiz, and Q&A time.*

**Carlson Theatre**

*Bellevue Community College*

3000 Landerholm Circle SE, Building E

Bellevue, WA 98004

*\*Drop-Off in Lot 14*

This morning of discovery is planned to awaken the inner health professional! Students will hear from health care professionals new to their fields, and those still completing training. Specialties (subject to confirmation) include: Medical Research; Medical Imaging; RN; Medical Assisting & LPN.

Speakers are diverse, dynamic and passionate about the fields they are in. There will also be an exciting interactive quiz throughout the event, to keep the students engaged and involved, while also stimulating questions about their future.

To earn a ticket to lunch, students will have a passport stamped by healthcare industry and education representatives, who will be available to talk with students following the full-group activities. Lunch will be ready to take along, as students depart BCC (no on-campus dining area available, sorry).

#### **Event Schedule:**

- Welcoming & Introduction
- Video Presentation
- 5 Speakers: "Who I Was In High School"
- Interactive Quiz throughout
- Q&A
- Allied Health Reps at Tables
- Stamped Passports will receive Lunch
- Depart BCC

**\*Bus subsidies: \$200/per bus**, will be handled individually. Clock hours available.

More details, maps & instructions to follow as the event date approaches.

#### *Information:*

Patricia Dombrowski (425) 564- 3164 [pdombrow@bcc.ctc.edu](mailto:pdombrow@bcc.ctc.edu)

Nina Seong (425)564-4044 [nina.seong@bellevuecollege.edu](mailto:nina.seong@bellevuecollege.edu)

#### *We are Proud to be Sponsored by:*

Bellevue Community College. College Credit & Careers Network. Evergreen Healthcare.

King County Work Training Program.. Snoqualmie Valley Hospital.

Snoqualmie Valley School District, Swedish Medical Center. The U.S. Department of Labor.

The Washington State Hospital Association. The Workforce Development Council of Seattle-King County.